



THE SCHOOL DISTRICT OF
PHILADELPHIA

BOARD OF
EDUCATION

GOALS & GUARDRAILS

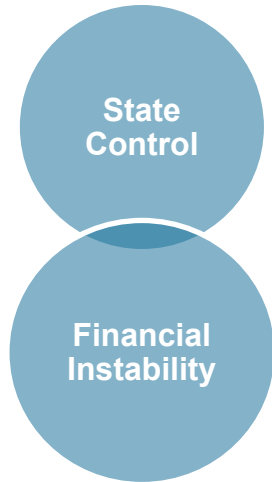
WHAT IS OUR PURPOSE?



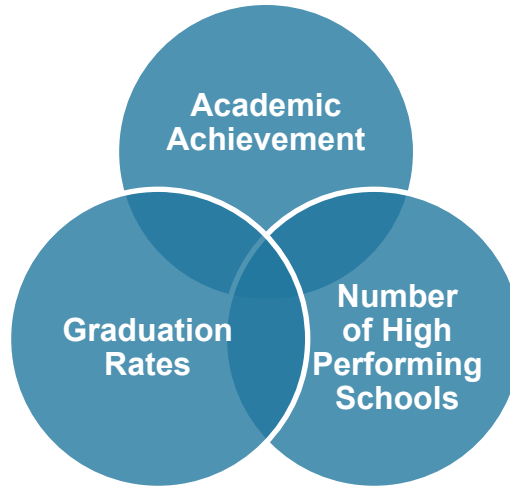
- To provide every student with the tools and experiences needed to reach their fullest potential.
- The Board's role is to ensure student learning and success and to hold the District accountable for achieving this.

ARE WE FULFILLING OUR PURPOSE?

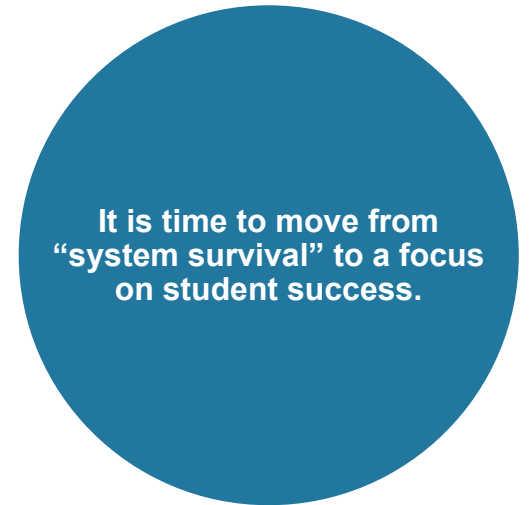
For nearly 20 years, the District lacked focus & operated in system survival mode.



We have made progress in:



We still have far to go.



COMPARISON OF STUDENT ACHIEVEMENT

On The Nation's Report Card, 2019

GRADE 4 MATHEMATICS

18%

of SDP students performed
at or above proficient level

19

districts performed
significantly higher

5

districts not
significantly different

2

districts performed
significantly lower

GRADE 4 READING

17%

of SDP students performed
at or above proficient level

16

districts performed
significantly higher

9

districts not
significantly different

1

districts performed
significantly lower

COMPARISON OF STUDENT ACHIEVEMENT

On The Nation's Report Card, 2019

GRADE 8 MATHEMATICS

16%

of SDP students performed
at or above proficient level

16

districts performed
significantly higher

5

districts not
significantly different

5

districts performed
significantly lower

GRADE 8 READING

17%

of SDP students performed
at or above proficient level

16

districts performed
significantly higher

9

districts not
significantly different

1

districts performed
significantly lower

OUR VISION

All children are capable of reaching their fullest potential, and they deserve a safe and nurturing school community where they are valued, respected and encouraged. Our vision is to ensure that all students are given an education that allows them to thrive, succeed and lead in a global society. We are committed to making the changes needed to provide our students, educators and leaders with the tools to make this vision real.

HOW WE PLAN TO GET THERE

GOALS

- Reading
- Math
- College & Career Readiness

GUARDRAILS

- Welcoming & Supportive Schools
- Enriching and well-rounded School Experiences
- Partnering with Parents/Family Members
- Addressing Racist Practices



GOAL 1 | READING

Vision: Every student reads on or above grade level.

Description: Reading is a bedrock skill for success in school, college, the workplace and life.



GOAL 2 | MATH

Vision: Every student performs on or above grade level in math.

Description: Students need a strong foundation in mathematics in order to access higher levels of learning in both the middle and high school grades and to succeed in diverse careers.



GOAL 3 | COLLEGE & CAREER

Vision: Every student graduates ready for college and careers.

Description: Every student needs to have the core academic knowledge and opportunity of experience that will prepare them for post-secondary success.

GUARDRAILS

Student achievement does not happen without providing students with the conditions they need to achieve. The following guardrails are the nonnegotiable conditions that must exist in schools in order to reach our goals

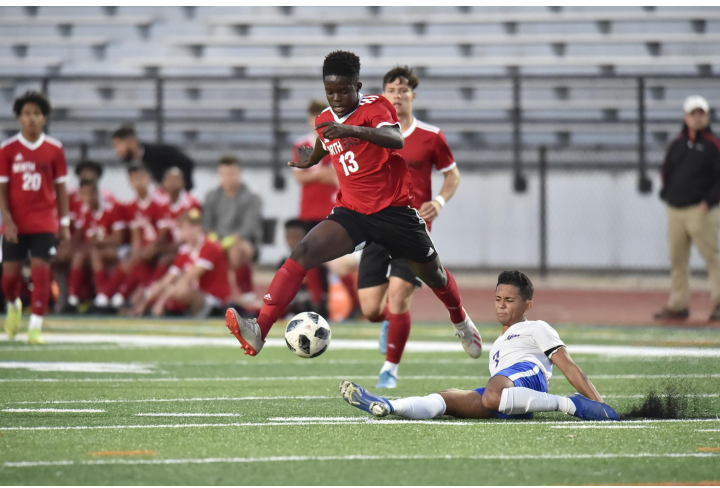


GUARDRAIL 1 WELCOMING & SUPPORTIVE SCHOOLS

Every school will be a safe, welcoming and healthy place where our students, staff and community want to be and learn each day.

This means that our schools will be:

- Environmentally safe and clean; and
- Spaces with inclusive climates that provide students with access to robust social, emotional and mental health supports.



GUARDRAIL 2 ENRICHING AND WELL-ROUNDED SCHOOL EXPERIENCES

Every student will have a well-rounded education with co-curricular opportunities, including arts and athletics, integrated into the school experience.





GUARDRAIL 3

Partnering with Parents/Family Members

Every parent and guardian will be welcomed and encouraged to be partners in their child's school community.

DISMANTLE SYSTEMIC RACISM

GUARDRAIL 4 Addressing Racist Practices

Our students' potential will not be limited by practices that perpetuate systemic racism and hinder student achievement.

How will this look and feel different?

Holding ourselves Accountable

Monthly Monitoring in
public

Self assessments

Holding the District Accountable

Superintendent Evaluation

Budget must align to our
vision

All District initiatives to align
with Goals and Guardrails

Example of Monitoring

Goal 1: The percentage of students in grades 3-8 who are proficient on the state ELA assessment will grow from 35.7% in August 2019 to 65.0% by August 2026.

Leading Indicator:

The percentage of students in grades 3-8 who score at or above grade-level on the District's within-year reading assessment in Fall, Winter, and Spring each year.

Student Subgroups:

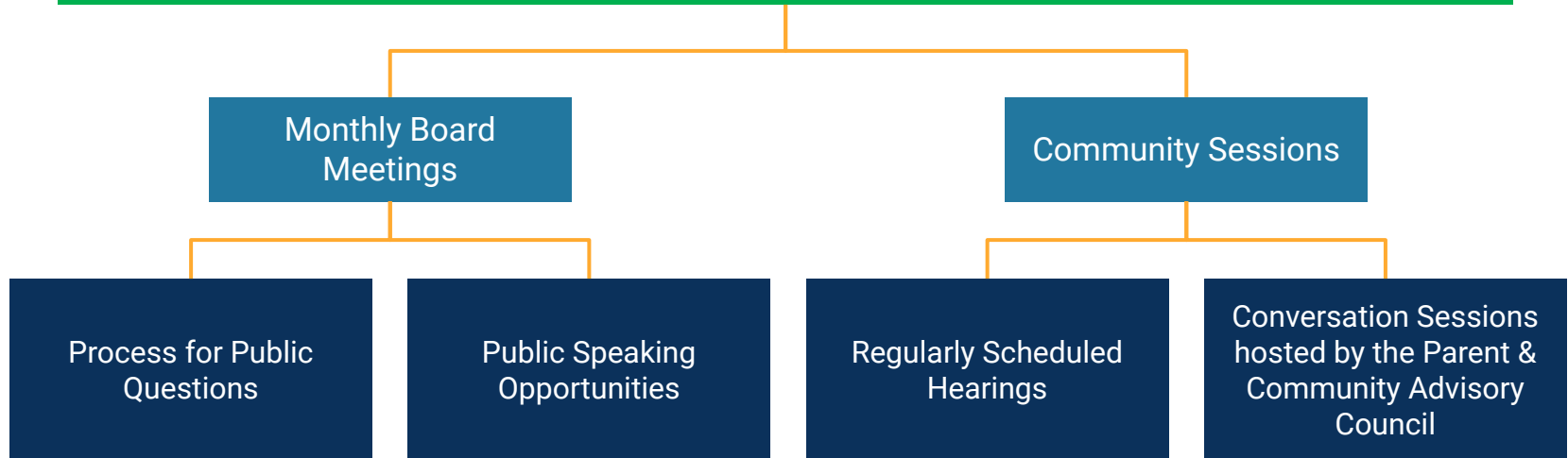
- Racial
- Special Education
- English Learners
- Economically Disadvantaged

Monitoring Questions:

- Who is struggling the most?
- What gaps exist between student groups?
- Why is it working or not working in this area?
- How do you know that strategy is going to work?
- How might changes show up in the future (i.e. budget)?

Public Engagement

Increasing Access & Deepening Participation



NEXT STEPS

FALL 2020

Public Sessions
on Goals &
Guardrails

DEC 2020

Formal Adoption
of Goals &
Guardrails

JAN 2021

Board monitors
District progress
towards Goals &
Guardrails



GOALS & GUARDRAILS

For more information visit:
www.philasd.org/schoolboard/goals-and-guardrails